



BMX SUPERCROSS
WORLD CUP

PAPENDAL
THE NETHERLANDS

Competition guide 2020



Content.



BMX SUPERCROSS
WORLD CUP

PAPENDAL
THE NETHERLANDS

Welcome & Introduction	3
Registration & Rules	4
Riders information	7
Access	14
Team information	17
Spectators information	23
About Arnhem & Gelderland	25
Partners	27



Welcome & Introduction.



**BMX SUPERCROSS
WORLD CUP**

**PAPENDAL
THE NETHERLANDS**

As High Performance Centre Papendal, the City of Arnhem and Province of Gelderland we are proud to invite you to compete for the 2020 UCI BMX Supercross World Cup at Papendal, Arnhem.

From Friday the 1st till Sunday the 3th of May 2020 we are organising a long weekend with different events. Besides the elite sports BMX Supercross World Cup event you can also enjoy our cultural, music & food event called Framed Festival. This festival is full of side events, clinics, performances and much more!

Papendal is surrounded by one of the most beautiful areas of nature in The Netherlands (the Veluwe), so we are sure you will enjoy your stay. If you don't find all the necessary information in this competition guide, don't hesitate to contact us. For any further information or assistance by e-mail, please contact: Melissa van Delft via melissa.vandelft@papendal.nl.

We hope you will enjoy the event and your stay at Papendal!

Jochem Schellens,
Director of High Performance Centre Papendal
& Hotel and Conference Centre Papendal



General information

The UCI BMX Supercross World Cup Papendal Arnhem will take place at the BMX track of Sport Centre Papendal, home of the Dutch National BMX Team.

From young promising athletes to world class athletes, the possibilities for (elite) sport are unlimited at Papendal. With its extensive experience, Papendal has been a very professional and reliable partner. Due to their wide knowledge of the requirements and demands of (elite) sport Papendal always performs at top level.

Sport Centre Papendal

Papendallaan 3
6816 VD ARNHEM
The Netherlands





**BMX SUPERCROSS
WORLD CUP**

PAPENDAL
THE NETHERLANDS

Registration & Rules

Registration

You can enter through the UCI website (www.uci.ch) by clicking the following;

- **Web services** (homepage on the right side, 2nd last link)
- **UCI World Cups**
- **“Riders registration”**

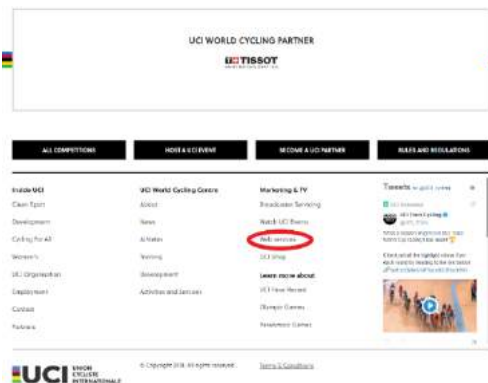
Access: personal login and password of each National Federation.

All riders must enter through their National Federation or by the BMX Team registered with the UCI of which they are a member; no individual entries will be accepted. Only Junior and Elite riders can participate at the UCI BMX Supercross World Cup.

Registration deadlines are indicated in the General Race Parameters.

http://regonline.uci.ch/layouts/login_Onlineservices.aspx?ReturnUrl=%2f

The name and the address of the hotel where the riders will stay must be given during the online registration.



Entry payments

The entry fee for the 2020 UCI BMX Supercross World Cup is **€ 250** for online registration. After the registration deadline the National Federation will receive an invoice by e-mail, sent by Papendal. There is a possibility to prepay the invoice or to pay on site cash (euros) or by credit card. In case of prepayment, the receipt needs to be taken to the competition.

The entry fee must be paid for all entries not withdrawn before the online registration deadline, whether the rider(s) concerned are confirmed or not. For more information regarding prepayment please contact us: melissa.vandelft@papendal.nl.

Late registrations

Late registration is only possible through the National Federation or UCI BMX Team and until the riders' confirmation on site which is on Thursday 30th April between 18.15 - 20.15. The entry fee for late registration is **€ 500** and must be paid immediately on site. Late entries are entries handled **after** the online registration deadline and **before** the riders' confirmation deadline. Once passed the riders' confirmation deadline no more late entries will be accepted.

Exchange rate: as per UCI [financial obligations](#).

Registration & Rules.



**BMX SUPERCROSS
WORLD CUP**

**PAPENDAL
THE NETHERLANDS**

Rules

The UCI BMX Supercross World Cup is governed by the current 2020 regulations which you can find [HERE](#).

Plates

Each rider will be assigned a front plate by the UCI when confirming the riders. These plates will be supplied by the UCI partner BOX Component and must be used by the riders.

UCI officials

UCI Technical Delegate	Luke Madill (AUS)
President of the Commissaires' panel (PCP)	Euan Goodman (GBR)
Assistant PCP	Kjell-Ivar Larsen (NOR)
Secretary	Christine Deconclois (FRA)
3rd Commissaire	John Pingol (USA)
Doping Control Officer (DCO)	Ulf Naslund (SWE) Karen Hargrave (FRA)





**BMX SUPERCROSS
WORLD CUP**

PAPENDAL
THE NETHERLANDS

Riders Information

Riders confirmation

Riders confirmation is on Thursday 30th of April between 18.15 - 20.15 at Hotel Papendal.

All riders/teams must attend the riders' confirmation, presenting their license and picking up their race numbers. Riders not being confirmed before the indicated deadline above did not complete the registration procedure and will not be able to compete at the event. Riders that were registered through the online system but that are unable to participate will still need to pay their entry fee to the organizer. The registration office is located at Hotel Papendal.

Riders accreditation

All rainbow passes are delivered to the teams during the first event. If additional sporting passes are necessary the request needs to be send before the event to kevin.maccuish@uci.ch. For the request, please indicate the reason, the name and the contact details of the person for whom they are requested.

Passes will be distributed during riders' confirmation in the registration room.

Riders access

All riders are provided with a wristband so they can access the premises. The wristband gives the riders also access to the seating area.

Extra practice possibilities

This year we are organizing some extra training days at Papendal. All participants of the UCI BMX Supercross World Cup can participate.

Date and time schedule

Tuesday 28 April 2020 between 17.30 and 19.30*

Wednesday 29 April 2020 between 17.30 and 19.30*

**Will only be held with at least 15 participants registered as noted below.*

Costs

- € 26,50 per rider per training incl. service costs.

Procedure

- Go to <https://pos.cmtickets.com/BMX-WC-organisation/step1>
- Buy a ticket per training.
- E-ticket will be send by email.
- On the day of your scheduled training please check-in at the BMX Track at 17:00. When showing your e-ticket you will receive a wristband which will give you access to the training.

Papendal Challenge Cup

On Friday 1 & Saturday 2 May the first edition of the Papendal Challenge Cup will take place! We're organizing this race for Challenge riders for the first time during the weekend of the BMX Supercross World Cup. Do you not want to miss this unique opportunity to compete on the official World Championships Track? Then sign up for the Papendal Challenge Cup! After the races you can enjoy Framed Festival and for the first time this year stay at the official Papendal Camping! *More information* <https://worldcup.bmxpapendal.nl/side-events/papendal-challenge-cup/>

Framed Festival

As already mentioned in our introduction we are organising a long weekend of events from Friday the 1st till Sunday the 3th of May 2020. Besides the BMX Supercross World Cup event, we organize a cultural urban event called Framed Festival. It is a weekend filled with great music, dance and art. Enjoy a spectacular side program with BMX stunts, a daredevil's playground for kids and a pump track. Young adults can enjoy spectacular dancebattles, skating clinics, freerunning, calisthenics and of course the pumptrack.



Day 0 - Thursday 30 April 2020

Start	Finish	Duration	Activity
14.00	20.00	06.00	Drop-off with car Team Area
17.30	18.30	00.30	Team Managers' Meeting
18.15	20.15	02.00	Riders' Confirmation

Day 1 - Friday 1 May 2020

Start	Finish	Duration	Activity
10.00			Stands open
10.00	14.30	04.30	Practice
14.30	15.15	00.30	Practice - Papendal Challenge Cup
15.15	18.15	03.00	Manches - Papendal Challenge Cup Papendal
18.15	19.15	01.00	Quarter finals - Papendal Challenge Cup

Day 2 - Saturday 11th May

Start	Finish	Duration	Activity
11.00			Stands open
11.00	14.00	03.00	Practice
14.35	15.20	00.45	Men Round 1
15.20	15.35	00.15	Women Round 1
15.35	15.40	00.05	Break
15.40	16.00	00.20	Men - Last Chance
16.00	16.10	00.10	Women – Last Chance
16.10	16.55	00.45	Break Semi-finals - Papendal Challenge Cup
16:55	17.25	00.30	Men 1/16 Finals
17.25	17.30	00.05	Break
17.30	17.45	00.15	Women 1/8 Finals
17.45	18.00	00.15	Men 1/8 Finals
18.00	18.15	00.15	Break Finals – Papendal Challenge Cup
18.15	18.25	00.10	Women ¼ Finals

Start	Finish	Duration	Activity
18.25	18.35	00.10	Men ¼ Finals
18.35	18.40	00.05	Break
18.40	18.50	00.10	Women ½ Finals
18.50	19.00	00.10	Men ½ Finals
19.00	19.10	00.10	Break
19.10	19.20	00.10	Women Finals
19.20	19.30	00.10	Men Finals
19.30	19.45	00.15	Awards Ceremony

Day 3 - Sunday 12th May

Start	Finish	Duration	Activity
11.30	12.30	01.00	Autograph session
12.30			Stands open
12.30	13.45	01.15	Warm-up
14.05	14.50	00.45	Men Round 1
14.50	15.05	00.15	Women Round 1
15.05	15.10	00.05	Break
15.10	15.35	00.25	Men – Last Chance
15.35	15.45	00.10	Women – Last Chance
15.45	16.30	00.45	Break
16.30	17.00	00.30	Men 1/16 Finals
17.00	17.05	00.05	Break
17.05	17.20	00.15	Women 1/8 Finals
17.20	17.35	00.20	Men 1/8 Finals
17.35	17.40	00.05	Break

Start	Finish	Duration	Activity
17.40	17.50	00.10	Women ¼ Finals
17.50	18.00	00.05	Men ¼ Finals
18.00	18.10	00.10	Break
18.10	18.20	00.10	Women ½ Finals
18.20	18.30	00.10	Men ½ Finals
18.30	18.40	00.10	Break
18.40	18.50	00.10	Women Finals
18.50	19.00	00.10	Men Finals
19.00	19.15	00.15	Awards Ceremony

Awards/trophies

The **trophies** will be awarded to the first three riders of each category at the awards ceremony.

Prize Money

High Performance Centre Papendal will pay equal prize money in accordance with the table found on this page.

Prize money will be paid in Euros by our bank-account, so please fill in the form when you have won prize money* at <https://worldcup.bmxpapendal.nl/ranking/> before the 1st of September 2020.

After this date there will be no payments done regarding the prize money.

*data: (1) Name, (2) Address, (3) Email rider, (4) IBAN-number, (5) BIC/SWIFT-code, (6) Bank name, (7) Bank Address, (8) International bank code (9) Country and (10) copy passport.

Price per race

	Men Elite	Women Elite
	Per race	Per race
1	€ 2500	€ 2500
2	€ 1500	€ 1500
3	€ 1000	€ 1000
4	€ 700	€ 700
5	€ 550	€ 550
6	€ 450	€ 450
7	€ 375	€ 375
8	€ 325	€ 325
5 ½	€ 275	€ 275
6 ½	€ 275	€ 275
7 ½	€ 250	€ 250
8 ½	€ 250	€ 250
	€ 9500	€ 9500

General ranking price

	Men Elite	Women Elite
	Per race	Per race
1	€ 10.000	€ 10.000
2	€ 6.000	€ 6.000
3	€ 4.000	€ 4.000
4	€ 1.900	€ 1.900
5	€ 1.600	€ 1.600
6	€ 1.400	€ 1.400
7	€ 1.200	€ 1.200
8	€ 1.000	€ 1.000
9	€ 650	€ 650
10	€ 600	€ 600
11	€ 500	€ 500
12	€ 450	€ 450
13	€ 400	€ 400
14	€ 350	€ 350
15	€ 300	€ 300
16	€ 250	€ 250
	€ 30.600	€ 30.600



**BMX SUPERCROSS
WORLD CUP**

**PAPENDAL
THE NETHERLANDS**

Access

Airports

Schiphol, Amsterdam Airport (100 km)	www.schiphol.nl
Rotterdam Airport (106 km)	www.rotterdam-airport.nl
Eindhoven Airport (89 km)	www.eindhovenairport.nl
Airport Weeze (51 km)	www.airport-weeze.de
Düsseldorf International (135 km)	www.duesseldorf-international.de
Brussels Airport (208 km)	www.brusselsairport.be

Public transportation

Go to Arnhem Central Station by train. Then, take bus 105 (direction Barneveld) to bus stop 'West End/Papendal'. From that point, it is a 10-minute walk to Hotel Papendal.

From Monday to Friday, between 7 am and 6 pm (holidays excluded) it is also possible to take bus 10 (direction 'Sportcentrum Papendal'). This bus goes directly to our site. From the bus stop it is a 5-minute walk to the venue.

Breng flex

You can also download the 'Breng flex app' of the same bus-company as bus 10 above mentioned. When you book a ticket using the app (€ 3,50) they will take you, from every bus stop in Arnhem, directly to Papendal:
<https://www.breng.nl/brengflex/1411> (only in Arnhem!).

Papendal Taxi- Taxi ABC

We offer a 'Papendal taxi' which you can book at the reception of our hotel The Papendal taxi runs between 7.00 and 24.00 from and to the Sonsbeek side of Arnhem central station. We advise you to book the taxi at least one hour in advance; clearly state you would like a 'Papendal taxi'. The costs are € 17.50 per person, per ride.
Taxi ABC, tel: 0031 26 260 0016

By car

From the west (Amsterdam, Leiden, Den Haag, Utrecht)

- A12 direction Arnhem
- exit 25: enter N224
- on N224: turn right direction
- after 1.5 kilometer: take exit Papendal

From the north/east (Groningen, Assen, Zwolle, Apeldoorn):

- A50 direction Arnhem
- follow A12 direction Utrecht
- exit 25: enter N224
- on N224: turn left, direction Arnhem
- after 1.5 kilometer: Papendal exit

From the south (Rotterdam, Venlo, Eindhoven, 's Hertogenbosch):

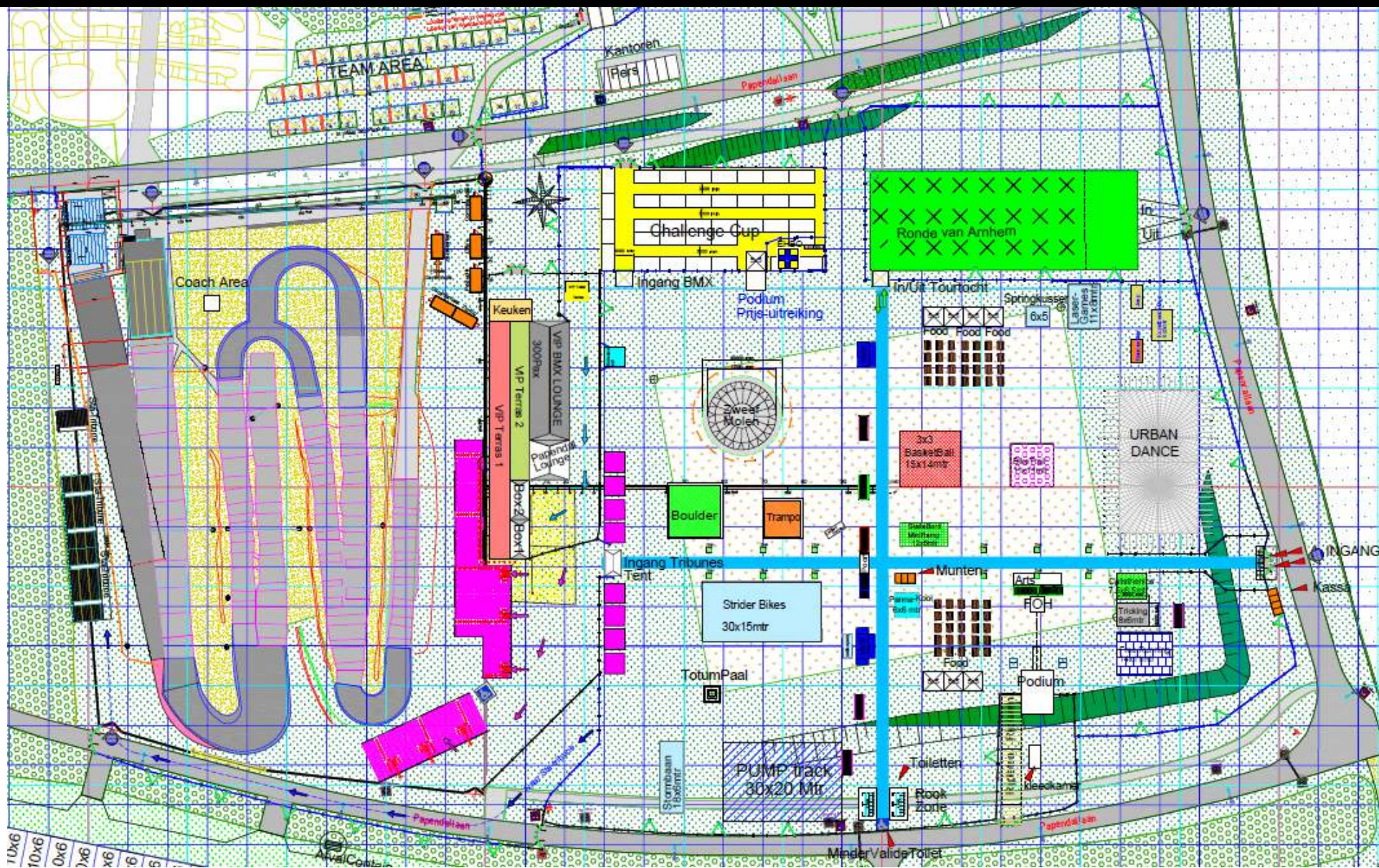
- A50 direction Arnhem
- follow A12 direction Utrecht
- exit 25: enter N224
- on N224: turn left, direction Arnhem
- after 1.5 kilometer: exit Papendal

Sidemap.



BMX SUPERCROSS
WORLD CUP

PAPENDAL
THE NETHERLANDS





BMX SUPERCROSS
WORLD CUP

PAPENDAL
THE NETHERLANDS

Team Information

Team bibs

Team BIBs will be provided for National Teams and UCI BMX Teams (1 or 2 per nation, depending on the number of entries from that team) by the Secretary during the riders confirmation. This takes place during riders' confirmation on Thursday 30th April between 18.15 and 20.15 at the registration room. Teams will be asked to pay a **€ 100** deposit.

The team BIBs give access to allocated places explained by the PCP during the Team Managers meeting. The bibs need to be returned to the Secretary at latest by the end of racing on Sunday 3rd May. You will also get the deposit back at that time.



Team areas

The team areas are situated behind the start hill. Team Areas are not accessible for cars. They need to be parked close to the team venue on the special VIP parking.

Parking

Parking for teams and riders is possible on the VIP parking. This parking is clearly indicated, and the car must be provided with a parking card. You will receive the parking card at the riders conformation.

Team managers meeting

The Team Managers meeting will be held at 17.30 on Thursday, 30th of April at Hotel Papendal.

Training opportunities

This year we are organizing some extra trainings days at Papendal. All participants of the UCI BMX Supercross World Cup can participate. Please see the procedure for buy a training ticket at page 8.

Date and time schedule

- Tuesday 28th of April 2020 between 17.30 and 19.30
- Wednesday 29th of April 2020 between 17.30 and 19.30

Papendal BMX track

The Papendal BMX track will not be open for (non-event) practice during the event week. The BMX Track can be booked for practise up until Friday 17th of April 2020. This can be booked through Sport Centre Papendal. To book time on the track and for more information about availability and prices please contact: Henny Kroon, Sportcentrum@Papendal.nl

There are several other BMX tracks that will be able to offer training for teams and individuals.

Kampen (Ned)

To book time and find out more about charges and availability please email Rudy van Dijk, rudy@zeinstravandijk.nl, or phone +31 6 5588 6003

Zolder (Bel)

To book time and find out more about charges and availability please email Lars Dewachtere, Lars.Dewachtere@circuit-zolder.be, or phone +32 1185 8874.

Team Information.



BMX SUPERCROSS
WORLD CUP

PAPENDAL
THE NETHERLANDS

Team area tents

All teams can have a 4 x 4 metre tent (13,1' x 13,1') at their disposal in the team area. A table, chairs and powerpoint are included.

A tent in the team area can be rented by teams for **€ 630,-**. Also it is possible to rent more than one tent; they will be connected to create one large space.

PLEASE NOTE: At the Team Area, located in zone 2 close to the start hill, there is room for 30 team tents. If the number of reservation exceeds 30, we will place the other tents at a secondary location. Spaces will be allocated on a first come, first serve base. Please note that bookings cannot be cancelled.

Team Areas will be accessible from 09.00 Friday 1st of May to Sunday 3rd of May 20.00.

The **drop-off** and the unloading of team equipment can only be on Thursday 30th from 12:00 to 20:00 and Friday morning from 08.00 to 10.00.

Equipment removal can be done on Sunday 3rd May from 20.00. Every tent must be cleared out by teams before 22:00.

Procedure

- Go to <https://pos.cmtickets.com/BMX-WC-organisation/step1>
- Buy a ticket for a team tent.



Medical Cover

A team of doctors and paramedics will be present throughout practise and racing. The team will be based on the track and also have use of a medical room at the bottom of the start ramp.

The medical team will be available at the following times:

Official Practice Day

Friday 1 May 2020	10:00 to 19:30
-------------------	----------------

Competition Days

Saturday 2 May 2020	11:00 to 19:30
---------------------	----------------

Sunday 3 May 2020	12:00 to 19:00
-------------------	----------------

The nominated hospital:

Hospital Rijnstate

Wagnerlaan 55
6815 AD Arnhem
+31 (0)26 378 8888

Be advised; when visiting the hospital you will need to bring;

1. Copy of ID/Passport, address, postal code and place of residence.
2. Copy of assurance / health care incl. phone number

Rider & Team Manager Seating

The team managers and riders have access to the seating area to watch the race. A not reserved sitting area. This will be accessed using an accreditation or wristband. There will also be a small area for Team Managers trackside on the start straight.

Water

We recommend to drink tap water or bottled water.

Food

We will also offer teams to purchase healthy lunch packages that will be delivered on site. These lunch packages can be reserved and purchased during the team manager meeting. Or please contact Melissa van Delft, melissa.vandelft@papendal.nl.

Video analysis

A part of the standing area will be reserved for video analysis. Entrance via the BMX Track. Entry passes will be given at the riders confirmation.

Team Information.



**BMX SUPERCROSS
WORLD CUP**

**PAPENDAL
THE NETHERLANDS**

Travel & accommodation

Official hotel

For accommodation during the UCI BMX Supercross World Cup, the Hotel Papendal with its comfortable four-star rooms is a perfect choice. Hotel Papendal is situated in woody surroundings and is within walking distance from the BMX track. Special discount rates apply for sports federations. Hotel Papendal offers the athletes and their staff the possibility to book a BMX-arrangement for this period at a special price.

Please contact Caroline van Kooten: caroline.vankooten@papendal.nl

Hotel Papendal
Papendallaan 3
6816 VD ARNHEM
Tel: +31 (0)26 483 79 11

Preferred hotels

The Bilderberg hotels are near High Performance Centre Papendal, these surrounding has been named to be the greenest surrounding of Holland. Bilderberg is ideal for training camps and strategic preparations for your team.

Hotel De Bilderberg
Utrechtseweg 261
6862 AK Oosterbeek
Tel: +31 (0)26 339 63 33

E: bilderberg.reservation@bilderberg.nl

Bilderberg Hotel De Buunderkamp
Buunderkamp 8
6874 NC Wolfheze
Tel: +31 (0)26 48211 66

E: buunderkamp.reservation@bilderberg.nl



Team Information.



BMX SUPERCROSS
WORLD CUP

PAPENDAL
THE NETHERLANDS

Media

All media planning to attend the event must be accredited in order to gain access to the venue. To apply for a press accreditation for the UCI BMX Supercross at Papendal you are obliged to fill in the form on the website www.bmxpapendal.com. To be awarded for an accreditation you need to be in possession of a valid press card. For any questions contact our press officer directly: angelique.vandongen@papendal.nl / +31 6 10537846.

Key Contacts

Sport & Technical Aspects UCI

Sporting and technical aspects, event management and coordination:

Mr. Kevin MacCuish, Olympic Games and Major Events Manager, kevin.maccuish@uci.ch

Sport & Technical Aspects Papendal

The organizing committee has appointed a coordinator Rudy van Dijk to act as the main point of contact between participants and the organizers. He will be available at the event to answer any enquiries.

Rudy van Dijk, rudy@zeinstravandijk.nl, +31 6 5588 6003.

Local Organising Committee

The 2020 UCI BMX Supercross at Papendal, Arnhem is organized by:

High Performance Centre Papendal

Papendallaan 9

6816 VD Arnhem

The Netherlands

+31 26 483 4537

E-mail: laurens.vanwaardenburg@papendal.nl

Website: www.bmxpapendal.com





BMX SUPERCROSS
WORLD CUP

PAPENDAL
THE NETHERLANDS

Spectators Information

Spectators Information.



**BMX SUPERCROSS
WORLD CUP**

**PAPENDAL
THE NETHERLANDS**

Parking

Parking is available on the premises of Papendal. Please follow the signing.

Ticket sale

The tickets are for sale by the following link: www.bmxpapendal.com. Each electronic ticket should be printed on beforehand to allow the access to the event. The riders, coaches and team managers don't pay their tickets.

Framed festival

As already mentioned in our introduction we are organising a long weekend of events from Friday the 1st till Sunday the 3th of May 2020. Besides the BMX Supercross World Cup event, we organize a cultural urban event called Framed Festival. It is a weekend filled with great music, dance and art. Enjoy a spectacular side program with BMX stunts, a daredevil's playground for kids and a pump track. Young adults can enjoy spectaculair dancebattles, skating clinics, freerunning, calisthenics and of course the pumptrack.

VIP Package

Watch world class BMX racing with an exclusive view!

VIP BMX Pavilion

€ 150,- p.p. per day

- Entrance to the festival grounds
- Entrance to the BMX track VIP BMX Pavilion
- VIP parking tickets
- Beverage package
- Mixed appetizers

VIP BMX Box

€ 12.000

- Entrance to the festival grounds
- Entrance to the BMX track VIP BMX Box
- VIP parking tickets
- Beverage package
- Food package

To book or for more information please e-mail Lisanne.vandijk@papendal.nl.

More information online

Join, follow and share the 2020 UCI BMX Supercross World Cup at Papendal, Arnhem

Facebook:

www.facebook.com/bmxpapendal

Instagram:

www.instagram.com/papendal

Twitter:

<https://twitter.com/BMXPapendalLive>

Official website:

<http://bmxpapendal.com/>



**BMX SUPERCROSS
WORLD CUP**

**PAPENDAL
THE NETHERLANDS**

About Arnhem & Gelderland

About Arnhem & Gelderland.



**BMX SUPERCROSS
WORLD CUP**

**PAPENDAL
THE NETHERLANDS**

Arnhem is situated in the province of Gelderland, famous for its wonderful forests and cultural habitats. For style and culture, visit Arnhem and the province. Here you find the famous Kröller-Müller Museum with its extensive sculpture garden. The Netherlands Open Air Museum, the famous Ouwehands Zoo and Burgers' Zoo are also close at hand. And of course the Airborne Museum. Discover the wonderful forests of the National Park "De Hoge Veluwe". This park is the largest continuous national park in the Netherlands. The area consists of 5,400 hectares of forest, heathland, marshland and drift-sand. There is a great diversity of plant and animal species and the Park is home to very rare species of thrush. Together with the Jachthuis Sint Hubertus, the Visitor Centre/Museonder, the Kröller-Müller Museum and the statues garden, the Park forms a unique and (inter)nationally famous combination of nature, art and architecture.

Arnhem is a bustling town where you will never get bored. Whatever your interests - shopping, going out, culture, or the countryside - might be. The historic town centre of Arnhem is definitely worth a visit. Restored to their former glory and joined underneath one of the shopping streets, the 40 medieval cellars show you what underground Arnhem used to look like. The history of the town is reflected in the town centre itself as well as in 100-year-old Sonsbeek park, where you can take a rest in the heart of the town! The Church of Eusebius dominates the skyline. This late Gothic ogive basilica boasts a unique glass lift, rising to 73 meters and offering you a view of the centre. On your way up you will also see the biggest carillon in Europe! Arnhem has been one of the most attractive shopping areas in the Netherlands for years, boasting a range of large chain stores and little clothes shops. Arnhem has turned into an attractive town for those with a passion for fashion. Your day, evening or weekend in Arnhem should not end until you have been to Korenmarkt, the bustling entertainment centre.

To discover more about Arnhem & Gelderland visit:

<http://www.vvarnhemnijmegen.nl/arnhem>

<http://www.geldersestreken.nl/>



Partners.



BMX SUPERCROSS
WORLD CUP

PAPENDAL
THE NETHERLANDS

Premium partners



Partners

